

说明: 每个链条的链条上增加物品号标记 (STN5111)  
 增加的物品号标记大小为40x10mm, 追加在链条时, 用乐天部品。

组立 NO. ASS. NO.	形 MODEL	链条轴 "a" AXLE "a"	W1	W2	W3
STN5111-101#A	S1000形	STN0101-004	1063	1015	531.5
STN5111-201	S800形	STN0101-005	863	815	431.5
STN5111-301	S600形	STN0101-006	663	615	331.5

- 注 1. 安装衬套(0401CAA001)时, 在其内表面添加润滑油。  
 2. 夹子及夹子环的安装参照A-A及B-B断面图, 注意安装方向。
- NOTE 1. GREASE TO INSIDE OF SLEEVE(0401CAA001) AT SETTING.  
 2. SET THE CLIP AND THE CLAMP AS SHOWN IN FIGURE. NOTICE FOR THE DIRECTION

JOB NO.		DRAWN		TITLE		SCALE 1:3
		DESIGNED		链条轴 STEP-CHAIN		
		CHECKED		DRAWING NO.		
		APPROVED		STN5111-1/2		
GS8000-NX 形: S1000, S800, S600形 基本材料: 不锈钢 轴 材: 中碳钢 额定扭矩 >180KN H.C.B.M.		FUJITEC CO.,LTD.		DRAWING NO.		(ORIGINAL)
				1		

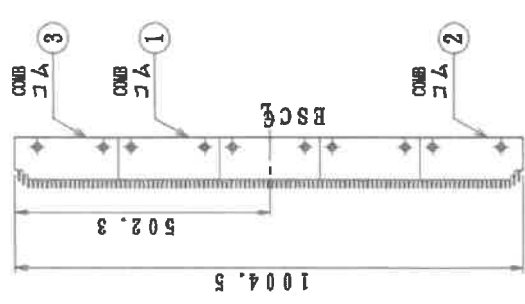




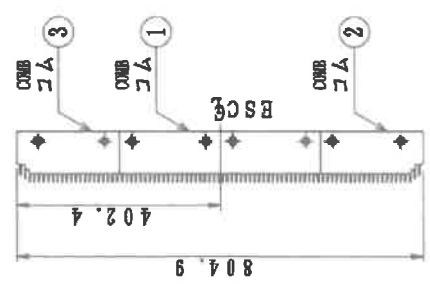
PRODUCT 商品NO.	1			2			MATERIAL OF COMB 梳齿材質
	COMB 1. コム	COMB 2. コム	COMB 3. コム	MACHINE SCREW 4. ピス	MODEL 形	PRODUCT NO.	
FPB5101-001	(3) 0129CAD001	0129CAE001	0129CAF001	(10) >S8X16-S	MODEL S1000形	FPB5101-001	POLYCARBONATE (YELLOW) 聚碳酸酯 (黄色)
FPB5101-002	(3) 0129CAD002	0129CAE002	0129CAF002	(10) >S8X16-S	MODEL S1000形	FPB5101-002	POLYCARBONATE (BLACK) 聚碳酸酯 (黑色)
FPB5101-003	(3) FPB0101-001	FPB0102-001	FPB0103-001	(10) >S8X16-S	MODEL S1000形	FPB5101-003	ALUMINIUM 铝合金
FPB5101-011	(2) 0129CAD001	0129CAE001	0129CAF001	(8) >S8X16-S	MODEL S 800形	FPB5101-011	POLYCARBONATE (YELLOW) 聚碳酸酯 (黄色)
FPB5101-012	(2) 0129CAD002	0129CAE002	0129CAF002	(8) >S8X16-S	MODEL S 800形	FPB5101-012	POLYCARBONATE (BLACK) 聚碳酸酯 (黑色)
FPB5101-013	(2) FPB0101-001	FPB0102-001	FPB0103-001	(8) >S8X16-S	MODEL S 600形	FPB5101-013	ALUMINIUM 铝合金
FPB5101-021	0129CAD001	0129CAE001	0129CAF001	(6) >S8X16-S	MODEL S 600形	FPB5101-021	POLYCARBONATE (YELLOW) 聚碳酸酯 (黄色)
FPB5101-022	0129CAD002	0129CAE002	0129CAF002	(6) >S8X16-S	MODEL S 600形	FPB5101-022	POLYCARBONATE (BLACK) 聚碳酸酯 (黑色)
FPB5101-023	FPB0101-001	FPB0102-001	FPB0103-001	(6) >S8X16-S	MODEL S 600形	FPB5101-023	ALUMINIUM 铝合金



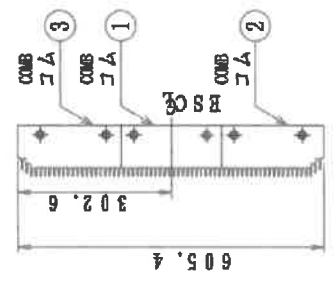
断面 A (A', A', A')



[S1000]



[S800]



[S600]

注: 配高边框模数

梳齿配置图

ARRANGEMENT OF COMB

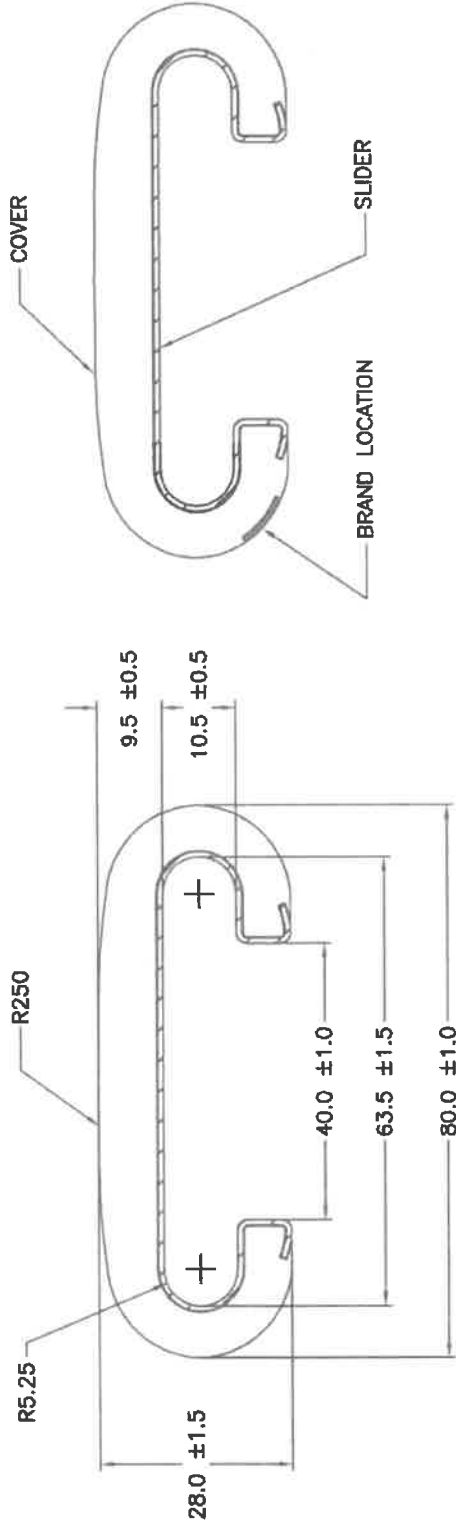
JOB NO.

STD-0344	DRAWN DESIGNED CHECKED APPROVED	李海龍	2009.01.06	TITLE INSTALLATION OF COMB 梳齿装配图	SCALE 1:10
				DRAWING NO. FPB5101	REV

FUJITEC CO.,LTD.

### BRAND INFORMATION

MANUFACTURER'S LOGO	WORK ORDER NUMBER	MONTH & YEAR OF MANUFACTURE	PURCHASE ORDER NUMBER
EHC	22783/2	11/92	HL-9284H



**NOTES:**

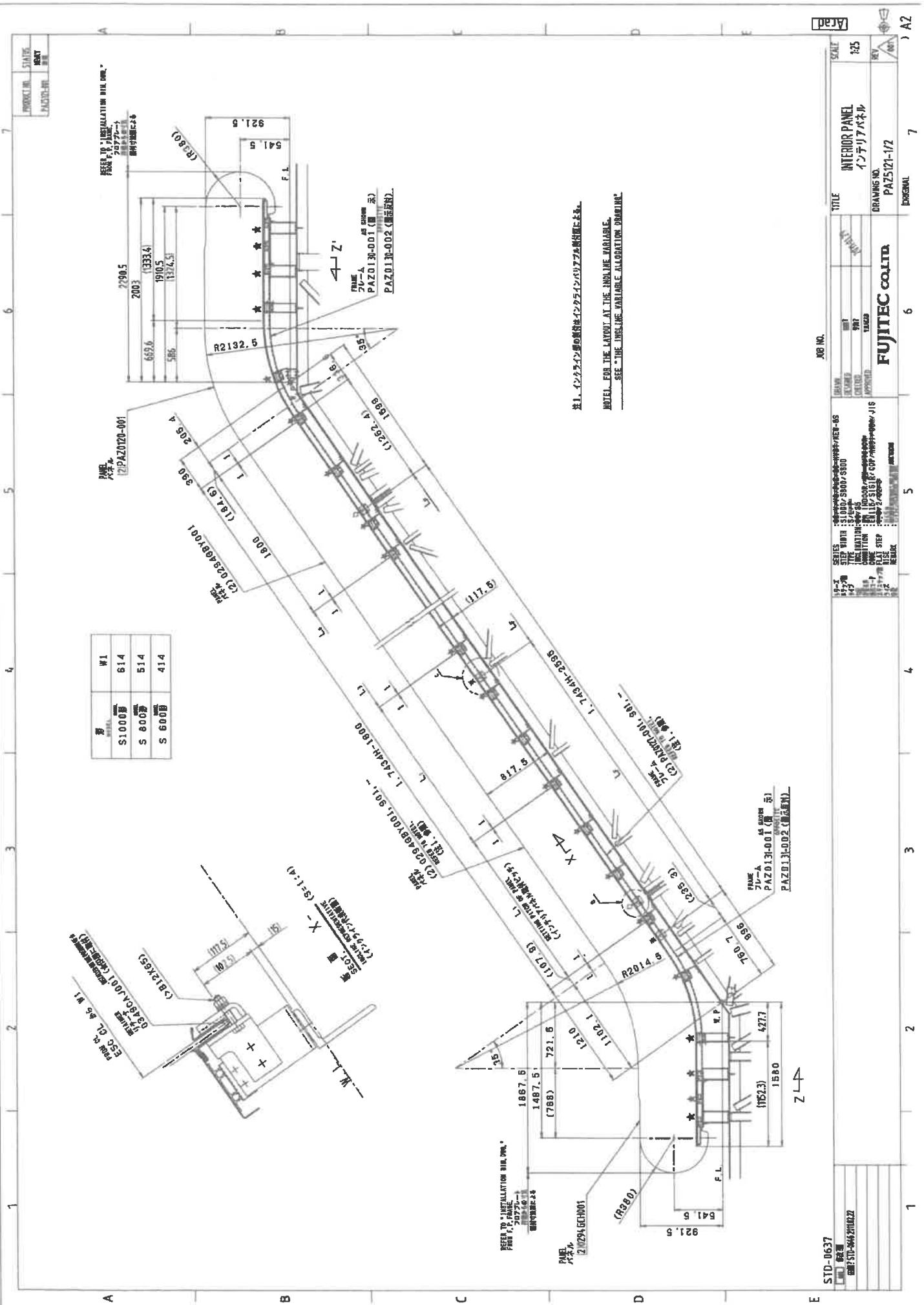
1. LENGTH TOLERANCE: AS PER CUSTOMER ORDER.
2. FOR HANDRAIL PERFORMANCE AND CHARACTERISTICS, SEE HANDRAIL SPECIFICATION.
3. CROSS SECTIONAL DIMENSIONS IN SPLICE MAY EXCEED DRAWING TOLERANCES BY UP TO 1mm.

DRAWN BY: Jason Wong	CHK. REF. 80NT
CHECKED BY: A.S.C	DATE: NOV 18, 1998
APP. BY: A.S.C	DO NOT SCALE
TITLE: 80NT BLACK & COLOUR	
DRAWING NO. 8020 02	
SHEET: 1 OF 1	

No	DATE	REVISION	BY	REV.
1	FEB 7/03	ADD NOTE 3	JW	
2	MAY 26/06	ADD CROWN RADIUS	JW	

THIS DOCUMENT CONTAINS INFORMATION PROPRIETARY AND CONFIDENTIAL TO SBC AND SHALL NOT BE REPRODUCED, COPIED OR MADE AVAILABLE TO OTHERS WITHOUT THE PRIOR WRITTEN CONSENT OF SBC.





種別	W1
1000	614
800	514
600	414

REFER TO "INSTALLATION DIM. DIM."  
FIG. 14, 20721-1  
標準仕様書

PANEL  
PAZ0130-001

REFER TO "INSTALLATION DIM. DIM."  
FIG. 14, 20721-1  
標準仕様書

PANEL  
PAZ0130-001

FRAME  
FL-A  
PAZ0130-001 (標準仕様)  
PAZ0130-002 (標準仕様)

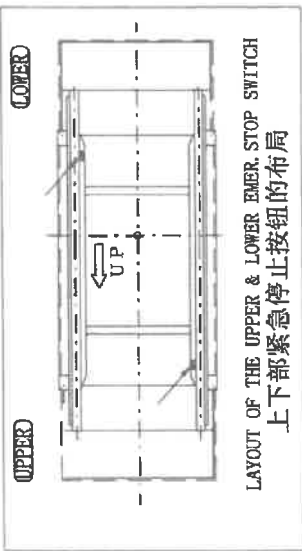
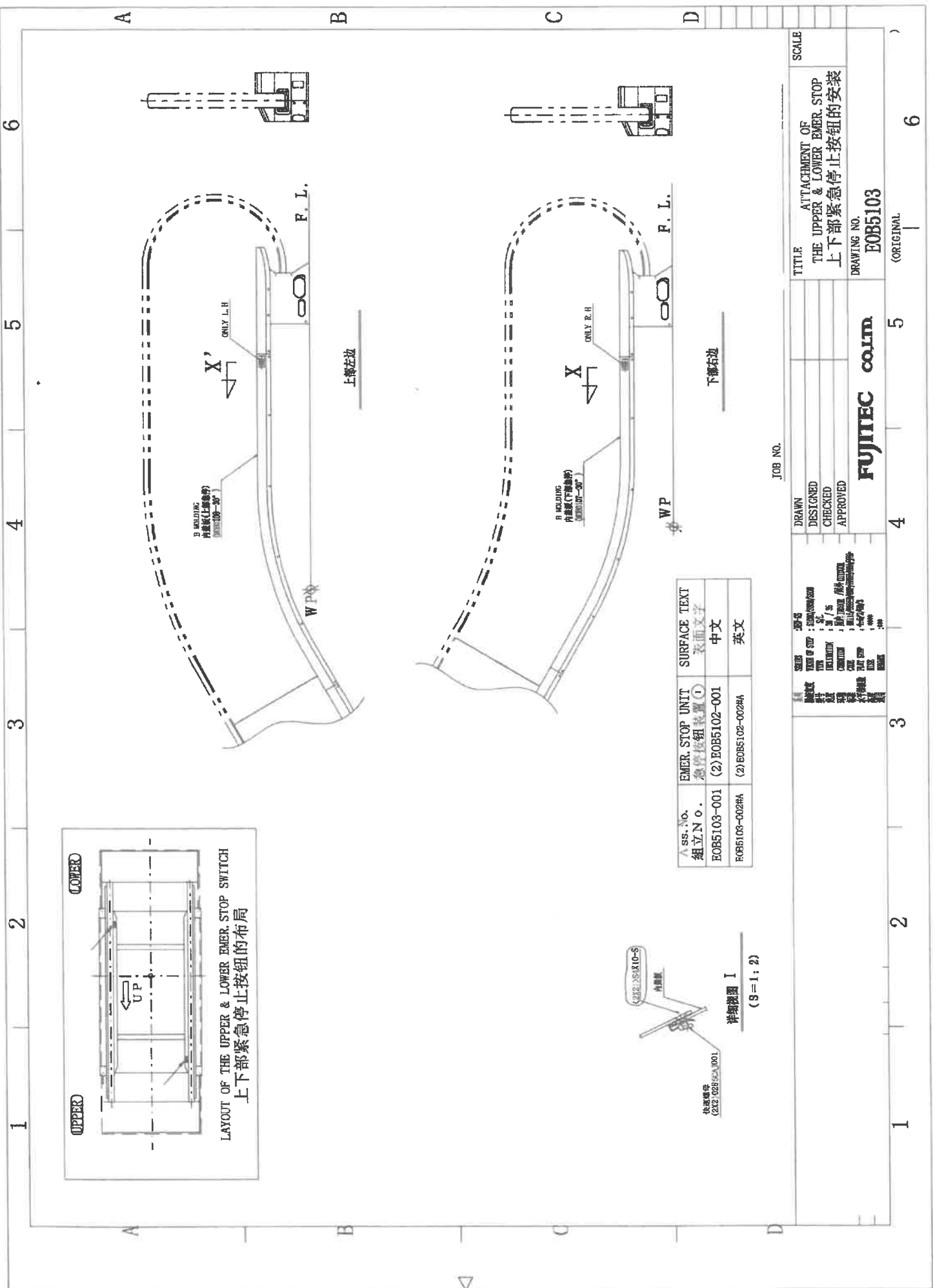
REFER TO "INSTALLATION DIM. DIM."  
FIG. 14, 20721-1  
標準仕様書

PANEL  
PAZ0130-001

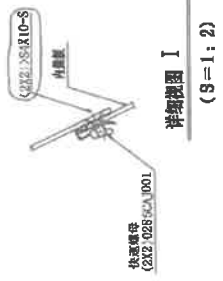
注1. インタラクティブな操作はインタラクティブパネルにのみ。  
MODEL FOR THE LAYOUT AT THE IN-LINE VARIABLE.  
SEE "THE IN-LINE VARIABLE ALLOCATION DRAWING"

JOB NO.		TITLE		SCALE	
0637	0637	INTERIOR PANEL	1/25		
FUJITEC CORP.		DRAWING NO.		JOB NO.	
		PAZ0130-1/2		0637	
		DRAWING		JOB NO.	
		PAZ0130-1/2		0637	
		DRAWING		JOB NO.	
		PAZ0130-1/2		0637	





Ass. No.	EMER. STOP UNIT	SURFACE TEXT
組立 No.	急停按钮装置 (1)	表面文字
EOB5103-001	(2) EOB5102-001	中文
EOB5103-002#A	(2) EOB5102-002#A	英文



JOB NO. \_\_\_\_\_

DRAWN	DESIGNED	CHECKED	APPROVED	SCALE
TITLE				ATTACHMENT OF
THE UPPER & LOWER EMER. STOP				
上下部紧急停止按钮的安装				
DRAWING NO.				
EOB5103				
(ORIGINAL)				

**FUJITEC** **co.ltd**